



The Global Language of Business

Transport Capacity Plan Business Message Standard (BMS)

Release 3.5.1, Draft, Jan 2022



Document Summary

| Document Item | Current Value |
|------------------|---|
| Document Name | Transport Capacity Plan Business Message Standard (BMS) |
| Document Date | Jan 2022 |
| Document Version | 3.5.1 |
| Document Issue | 1 |
| Document Status | Draft |

Work Request Reference

| Date of WR Submission to GSMP | WR Submitter(s) | Refer to Work Request (WR) Number(s) |
|-------------------------------|-------------------|--------------------------------------|
| 08-Jul-2009 | DHL | 09-000189 |
| 07-Feb-2014 | GS1 Germany | 14-000021 |
| 20-Mar-2014 | GS1 Slovenia | 14-000044 |
| 25-Jun-2014 | GS1 Global Office | 14-000110 |
| 03-Oct-2018 | GS1 GO | 18-000319 |

Business Requirements Document (BRAD) Reference

| BRAD Title | BRAD Issue Date | BRAD Version |
|--------------------|-----------------|--------------|
| Transport Planning | March 2011 | 1.0 |

Document Change History

| Date of Change | Version | Changed By | Reason for Change | Summary of Change |
|----------------|---------------------|-----------------|-------------------|------------------------|
| 12-Jan-2012 | BMS 3.0 – Issue 1 | Mark Van Eeghem | BMS Release 3.0 | See summary of changes |
| 01-May-2013 | BMS 3.1 – Issue 1 | Coen Janssen | BMS Release 3.1 | See summary of changes |
| 15-Sep-2014 | BMS 3.2 – Issue 1 | Ewa Iwicka | BMS Release 3.2 | See summary of changes |
| 01-Mar-2017 | BMS 3.3 – Issue 1 | Ewa Iwicka | BMS Release 3.3 | See summary of changes |
| 15-Oct-2018 | BMS 3.4 – Issue 1 | Ewa Iwicka | BMS Release 3.4 | See summary of changes |
| 03-Feb-2021 | BMS 3.5 – Issue 1 | Miklos Bolyky | BMS Release 3.5 | See summary of changes |
| 05-Jan-2022 | BMS 3.5.1 – Issue 1 | Miklos Bolyky | BMS Release 3.5.1 | See summary of changes |

Disclaimer

GS1®, under its IP Policy, seeks to avoid uncertainty regarding intellectual property claims by requiring the participants in the Work Group that developed this **Transport Capacity Plan Business Message Standard (BMS)** to agree to grant to GS1 members a royalty-free licence or a RAND licence to Necessary Claims, as that term is defined in the GS1 IP Policy. Furthermore, attention is drawn to the possibility that an implementation of one or more features of this Specification may be the subject of a patent or other intellectual property right that does not involve a Necessary Claim. Any such patent or other intellectual property right is not subject to the licencing obligations of GS1. Moreover, the agreement to grant licences provided under the GS1 IP Policy does not include IP rights and any claims of third parties who were not participants in the Work Group.

Accordingly, GS1 recommends that any organization developing an implementation designed to be in conformance with this Specification should determine whether there are any patents that may encompass a specific implementation that the organisation is developing in compliance with the Specification and whether a licence under a patent or other intellectual property right is needed. Such a determination of a need for licencing should be made in view of the details of the specific system designed by the organisation in consultation with their own patent counsel.

THIS DOCUMENT IS PROVIDED "AS IS" WITH NO WARRANTIES WHATSOEVER, INCLUDING ANY WARRANTY OF MERCHANTABILITY, NONINFRINGEMENT, FITNESS FOR PARTICULAR PURPOSE, OR ANY WARRANTY OTHERWISE ARISING OUT OF THIS SPECIFICATION. GS1 disclaims all liability for any damages arising from use or misuse of this Standard, whether special, indirect, consequential, or compensatory damages, and including liability for infringement of any intellectual property rights, relating to use of information in or reliance upon this document.

GS1 retains the right to make changes to this document at any time, without notice. GS1 makes no warranty for the use of this document and assumes no responsibility for any errors which may appear in the document, nor does it make a commitment to update the information contained herein.

GS1 and the GS1 logo are registered trademarks of GS1 AISBL.

Table of Contents

| | | |
|----------|---|-----------|
| 1 | Business Domain View | 5 |
| 1.1 | Introduction | 5 |
| 1.2 | References | 5 |
| 2 | Business Context | 5 |
| 3 | Business Transaction View | 6 |
| 3.1 | Business Transaction – Manage Transport Capacity Plan | 6 |
| 4 | Business Information View | 8 |
| 4.1 | Transport Capacity Plan | 8 |
| 4.2 | Transport Capacity Plan Line Item | 10 |
| 4.3 | Enumerations (message specific) | 13 |
| 4.4 | Code Lists | 13 |
| 5 | Business Message Examples | 14 |
| 5.1 | Example..... | 14 |
| 6 | Implementation Considerations..... | 15 |
| 6.1 | User Guide | 15 |
| 6.2 | Message Specific Considerations | 15 |
| 7 | Summary of Changes | 16 |
| 7.1 | BMS Release 3.0 | 16 |
| 7.2 | BMS Release 3.1 | 16 |
| 7.3 | BMS Release 3.2 | 16 |
| 7.4 | BMS Release 3.3 | 18 |
| 7.5 | BMS Release 3.4 | 18 |
| 7.6 | BMS Release 3.5 | 18 |
| 7.7 | BMS Release 3.5.1 | 18 |
| 8 | Appendices | 19 |
| 9 | Acknowledgements..... | 19 |
| 9.1.1 | Work Group | 19 |
| 9.1.2 | Development Team Members | 20 |

1 Business Domain View

1.1 Introduction

Message Definition

The Logistic Services Seller is responsible for developing the Transport Capacity Plan. He does this based on the Transport Capacity Requirements communicated to him by the Logistic Services Buyer.

Principles

This BMS is a part of the global GS1 standard for transport planning, enabling Logistic Services Buyers to share capacity forecasts for transportation equipment required by trade lane, origin and destination with Logistic Services Sellers. In this way, Logistic Services Sellers can anticipate the demand for transportation capacity, and can measure their ability to support projected volumes. By providing this visibility to Logistic Services Sellers, the seller will have a reduced need to react to equipment requirements at a moment's notice, easing capacity constraints, improving the efficiency of equipment deployment and utilization, and ultimately taking out unnecessary cost in the supply chain.

Given that the Logistic Services Seller will likely have numerous clients, he should evaluate capacity commitments to all buyers before determining whether they can support the capacity needs of each individual buyer. Based on a number of factors, the Logistic Services Seller may determine the need to allocate capacity from one client to another.

When analysing the forecast received from the Logistic Services Buyer, the Logistic Services Seller may combine the cargo (for multiple requirement lines) if they are for the same trade lane (i.e. origin/destination), forecast bucket, and service requirement level (e.g. refrigerated vs. general cargo).

1.2 References

| Reference Name | Description |
|--|---|
| BRAD Transport Planning (GS1, 2011) | |
| Logistics Interoperability Model (GS1, 2007) | |
| BMS eCom Domain Common Library Release 3.5.1 | The documented design of components that are used in multiple messages within the eCom domain. |
| BMS Shared Common Library Release 3.5.1 | The documented design of components that are used in multiple messages within the eCom domain and GDSN. |

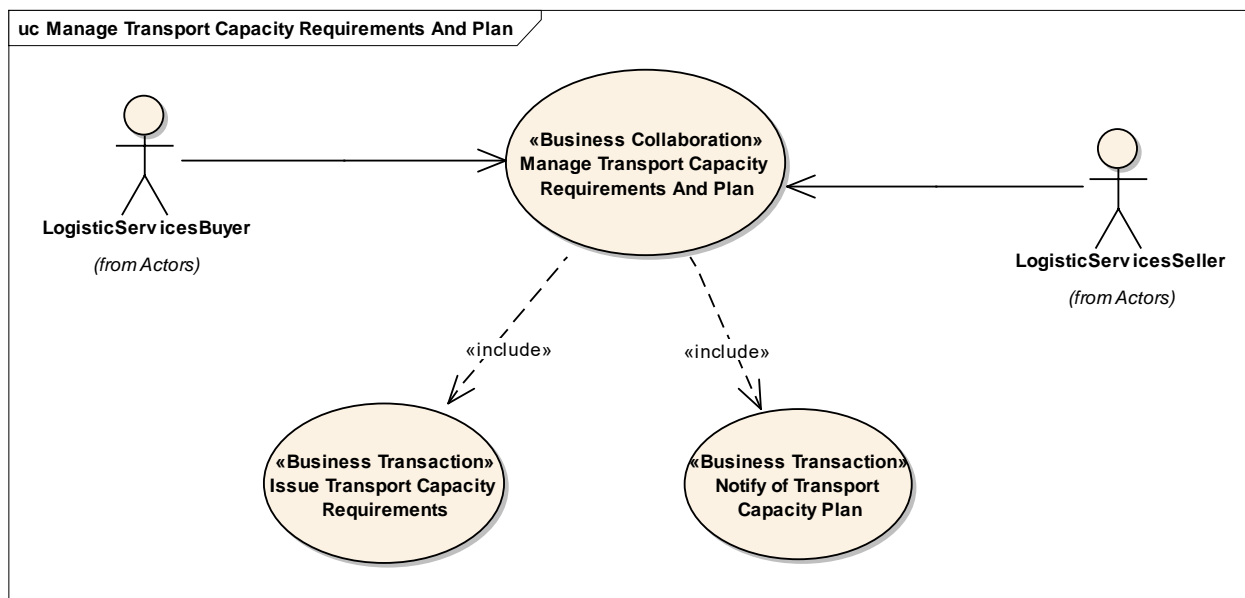
2 Business Context

| Context Category | Value(s) |
|----------------------|----------------------|
| Industry | All |
| Geopolitical | All |
| Product | All |
| Process | Transport Management |
| System Capabilities | GS1 System |
| Official Constraints | None |

3 Business Transaction View

3.1 Business Transaction – Manage Transport Capacity Plan

Use Case Diagram



Use Case Description

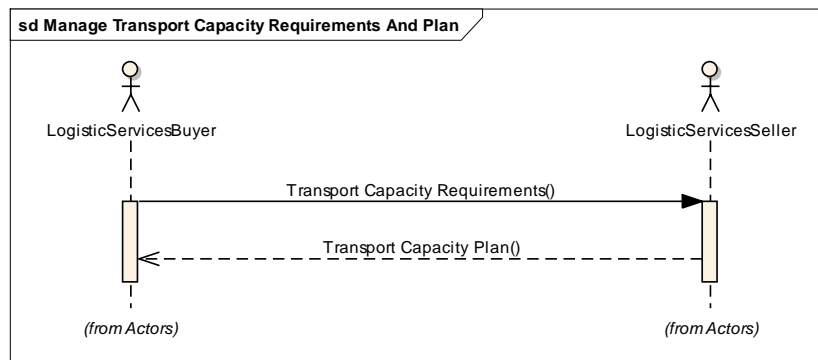
| Use Case ID | UC-1B |
|----------------------|--|
| Use Case Name | Notify of Transport Capacity Plan |
| Use Case Description | The purpose of this transaction is to enable the Logistic Service Seller to submit a transport capacity plan to the Logistic Service Buyer, identifying how they will support the transport capacity requirements. |
| Actors (Goal) | Logistic Service Buyer (LSB) Logistic Service Seller (LSS) |
| Performance Goals | |
| Preconditions | <p>The LSS has received the transport capacity requirements (capacity forecast) from the LSB.</p> <p>The trading partners have agreed upon:</p> <ul style="list-style-type: none"> Timeframe that the transport capacity plan should be sent after receipt of transport capacity requirements. Time Horizon of the information within the message Forecast Buckets which organize the data based on the time horizon (e.g. data in message that is for 3-4 months prior to shipment – "buckets" are per month; 2 months prior – "buckets" are per week; 1 month prior – "buckets" are by week for weeks 3& 4, and by day for weeks 1 & 2) <p>Partners have also pre-defined the freight terms, geographic scope of partnership, and distribution strategies to be utilized.</p> |
| Post conditions | The LSB has received the transport capacity plan. |

| Use Case ID | UC-1B |
|----------------------|--|
| Scenario | <p>Begins when... The LSS has received the transport capacity requirements</p> <p>Continues with...</p> <ul style="list-style-type: none"> ■ The LSS develops a transport capacity plan ■ The LSS sending the transport capacity plan to the LSB ■ The LSB receiving the transport capacity plan <p>Ends when... LSB has received the transport capacity plan</p> |
| Alternative Scenario | |
| Related Requirements | |
| Related Rules | |

Activity Diagram(s)

Not applicable

Sequence Diagram(s)

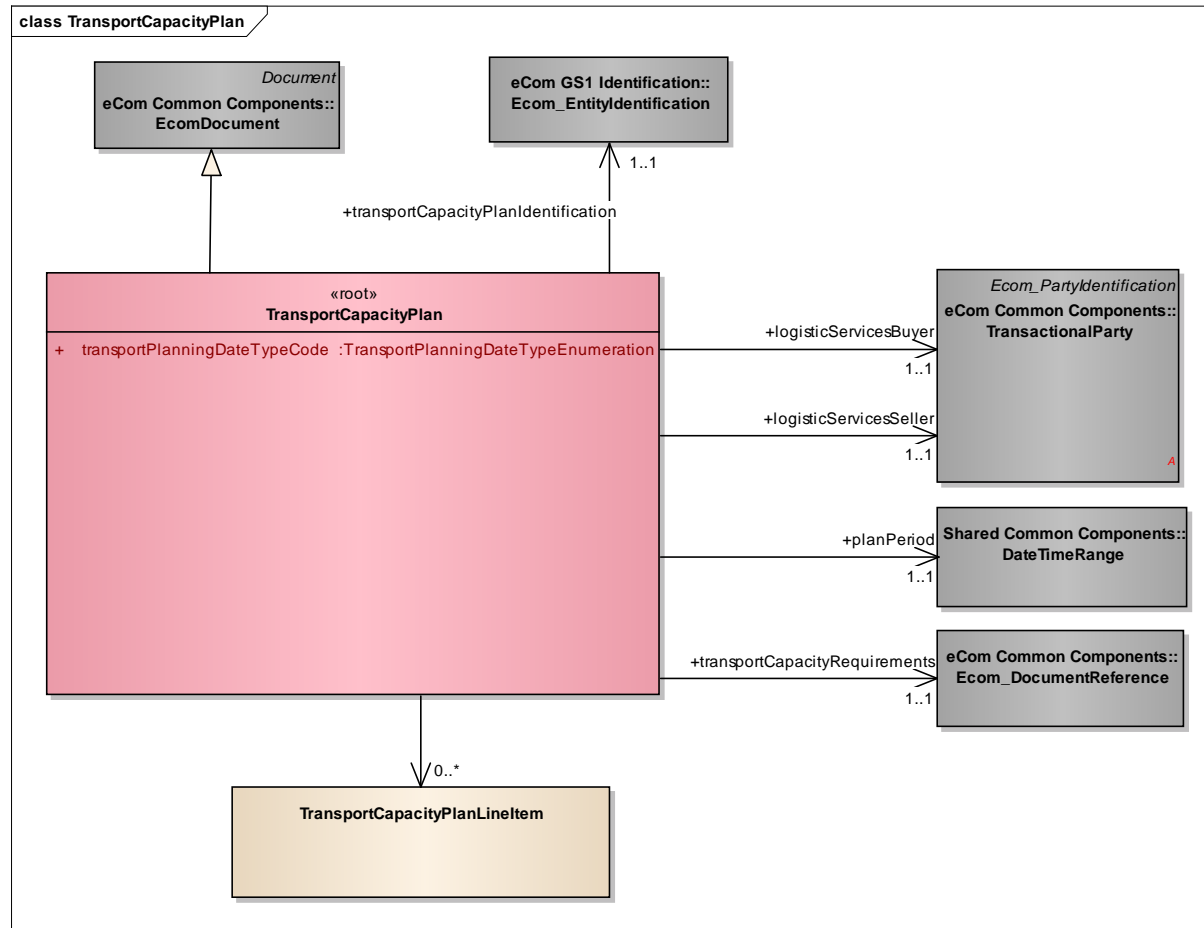


NOTE: Sending of the transport capacity plan is optional. When used it must be in reply to Transport Capacity Requirements.

4 Business Information View

4.1 Transport Capacity Plan

Class diagram



GDD report

The content of the TransportCapacityPlan class, its structure and component definitions can be accessed in the Global Data Dictionary:

http://apps.gs1.org/GDD/bms/Version3_4/Pages/bieDetails.aspx?semanticURN=urn:gs1:gdd:bie:TransportCapacityPlan

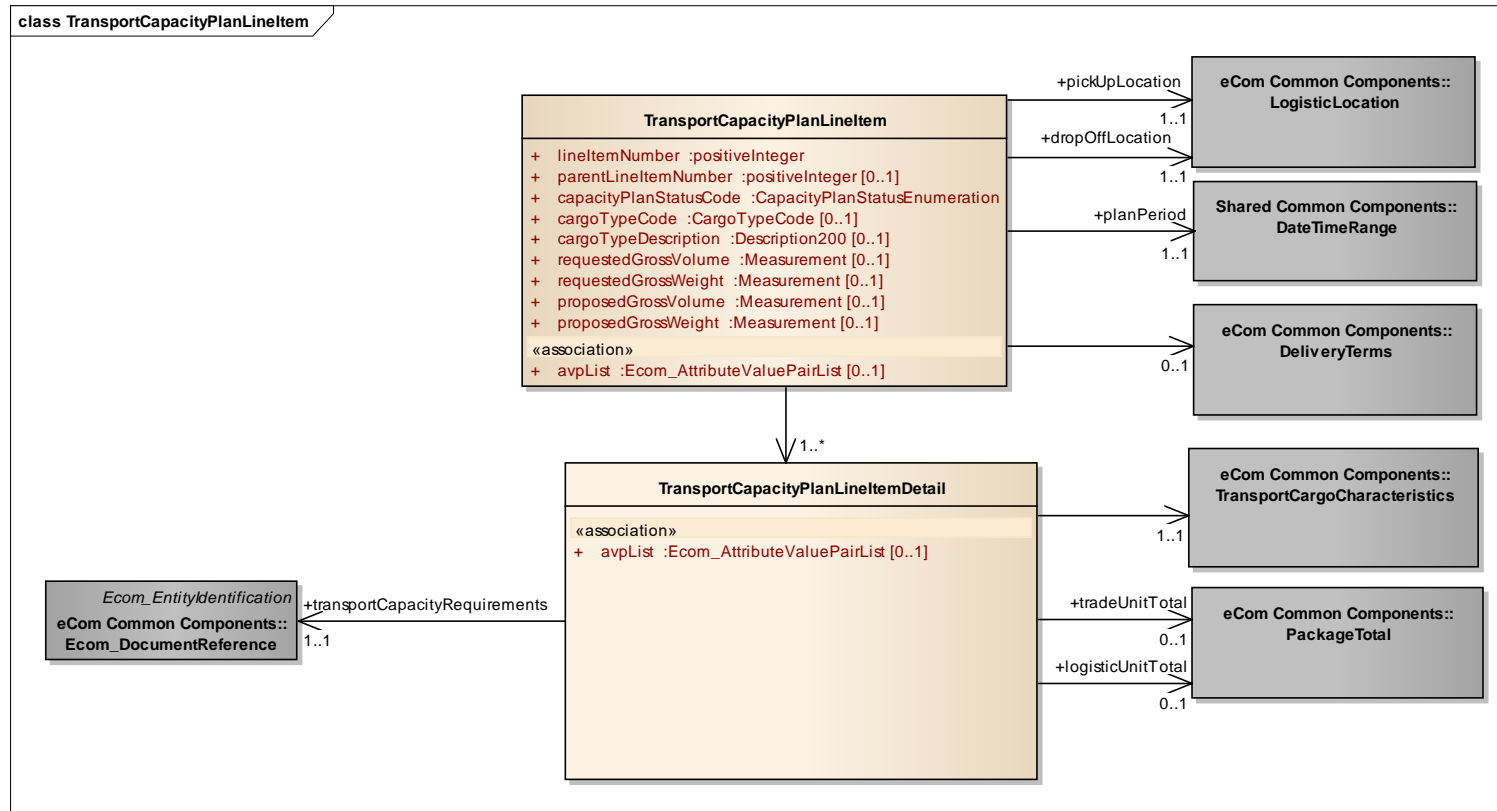
| Content | Attribute / Role | Datatype / Secondaryclass | Multiplicity | Definition | Requirements |
|-----------------------|-------------------------------------|--------------------------------------|--------------|---|--|
| TransportCapacityPlan | | | | Transport Capacity Plan is created by the Logistic Services Seller based on the Transport Capacity Requirements communicated to him by the Logistic Services Buyer. | |
| Association | | TransportCapacityPlanLineItem | 0..* | Specifies the transport capacity plan on detail level. | BRAD Transport Planning - TCP9 |
| Association | transportCapacityRequirements | Ecom_DocumentReference | 1..1 | Reference to the transport capacity requirements message on which the plan has been based. | BRAD Transport Planning - TCP8 WR 15-000314 |
| Association | transportCapacityPlanIdentification | Ecom_EntityIdentification | 1..1 | Provides the unique identification of the transport capacity plan. | BRAD Transport Planning - TCP1 WR 15-000314 |
| Association | logisticServicesSeller | TransactionalParty | 1..1 | A party that provides logistics services to another party. | BRAD Transport Planning - TCP7 |
| Association | logisticServicesBuyer | TransactionalParty | 1..1 | A party that purchases logistics services from another party. | BRAD Transport Planning - TCP6 |
| Generalization | | EcomDocument | | Basic information about the content of the message including version number, creation date and time. | BRAD Transport Planning - TCP2, TCP3 |
| Association | planPeriod | DateTimeRange | 1..1 | The period to which the plan applies. | BRAD Transport Planning - TCP4 |
| Attribute | transportPlanningDateTypeCode | TransportPlanningDateTypeEnumeration | 1..1 | Code specifying the type of date used for transport planning, i.e. the delivery date or the pick-up date. | BRAD Transport Planning - TCP5 |



Note: Reference Shared Common Library Business Message (BMS) Release 3.5.1 and eCom Domain Common Library Business Message (BMS) Release 3.5.1 for all common information.

4.2 Transport Capacity Plan Line Item

Class Diagram



GDD Report

The content of the TransportCapacityPlanLineItem class, its structure and component definitions can be accessed in the Global Data Dictionary:

http://apps.gs1.org/GDD/bms/Version3_4/Pages/bieDetails.aspx?semanticURN=urn:gs1:gdd:bie:TransportCapacityPlanLineItem

| Content | Attribute / Role | Datatype / Secondaryclass | Multiplicity | Definition | Requirements |
|-------------------------------|------------------|---------------------------|--------------|---|--------------|
| TransportCapacityPlanLineItem | | | | Specifies the planned transport capacity allocation for a given route and cargo type. | |



| Content | Attribute / Role | Datatype / Secondaryclass | Multiplicity | Definition | Requirements |
|-------------|------------------------|-------------------------------------|--------------|--|---------------------------------------|
| Association | dropOffLocation | LogisticLocation | 1..1 | The location where the goods need to be delivered. | BRAD Transport Planning - TPL7 (TCL1) |
| Association | planPeriod | DateTimeRange | 1..1 | The period to which the transport capacity plan line item applies. | BRAD Transport Planning - TPL8 (TPS1) |
| Association | pickUpLocation | LogisticLocation | 1..1 | The location where the goods need to be collected. | BRAD Transport Planning - TPL7 (TCL1) |
| Association | | DeliveryTerms | 0..1 | The applicable legal, customs, financial and insurance terms for the delivery of the goods. | BRAD Transport Planning - TPL3 |
| Association | | TransportCapacityPlanLineItemDetail | 1..* | Details on the transport capacity requirements on which the plan is based. | BRAD Transport Planning - TPL9 |
| Attribute | lineItemNumber | positiveInteger | 1..1 | The sequence number for this shipment item. | BRAD SHI2 |
| Attribute | capacityPlanStatusCode | CapacityPlanStatusEnumeration | 1..1 | Code specifying the degree to which the requested capacity can be supported. | BRAD Transport Planning - TPL4 |
| Attribute | cargoTypeCode | CargoTypeCode | 0..1 | Code specifying the classification of a type of cargo for example hazardous cargo. | BRAD Transport Planning - TPL2 |
| Attribute | cargoTypeDescription | Description200 | 0..1 | Free text specifying the classification of a type of cargo. | BRAD Transport Planning - TPL2 |
| Attribute | requestedGrossVolume | Measurement | 0..1 | The requested transport capacity expressed as the volume of the goods, calculated by multiplying the maximum length, width, and height of the packaged goods. | BRAD Transport Planning - TPL5 |
| Attribute | requestedGrossWeight | Measurement | 0..1 | The requested transport capacity expressed as the weight of the goods, including the weight of transport packaging, and potentially the weight of any transport equipment. | BRAD Transport Planning - TPL5 |
| Attribute | proposedGrossVolume | Measurement | 0..1 | The proposed transport capacity expressed as the volume of the goods, calculated by multiplying the maximum length, width, and height of the packaged goods. | BRAD Transport Planning - TPL6 |
| Attribute | proposedGrossWeight | Measurement | 0..1 | The proposed transport capacity expressed as the weight of the goods, including the weight of transport packaging, and potentially the weight of any transport equipment. | BRAD Transport Planning - TPL6 |

| Content | Attribute / Role | Datatype / Secondaryclass | Multiplicity | Definition | Requirements |
|-------------------------------------|-------------------------------|-------------------------------|--------------|--|--|
| Attribute | parentLineItemNumber | positiveInteger | 0..1 | The number of line item containing information about the parent of the current item. It allows establishing hierarchical link between the two items. | |
| Attribute | avpList | Ecom_AttributeValuePairList | 0..1 | Temporary attributes introduced between minor versions. | |
| TransportCapacityPlanLineItemDetail | | | | Specifies the requested transport capacity allocation for a given route and cargo type. | |
| Association | logisticUnitTotal | PackageTotal | 0..1 | The total number of logistic units to be transported. | BRAD Transport Planning - TRD5 |
| Association | | TransportCargoCharacteristics | 1..1 | Aggregate information on the goods to be transported. | BRAD Transport Planning - TRD2, TRD3, TRD4, TRD6 |
| Association | transportCapacityRequirements | Ecom_DocumentReference | 1..1 | Reference to the related transport capacity requirements line item. | BRAD Transport Planning - TRD1 WR 156-000314 |
| Association | tradeUnitTotal | PackageTotal | 0..1 | The total number of trade units (e.g. cases) to be transported. | BRAD Transport Planning - TRD5 |
| Attribute | avpList | Ecom_AttributeValuePairList | 0..1 | Temporary attributes introduced between minor versions. | |



Note: Reference Shared Common Library Business Message (BMS) Release 3.5.1 and eCom Domain Common Library Business Message (BMS) Release 3.5.1 for all common information.

4.3 Enumerations (message specific)

Not applicable

4.4 Code Lists

| Class | Codelist | GDD Link |
|--------------------------------------|--------------------------------------|---|
| TransportCapacityPlanLineItem | CapacityPlanStatusEnumeration | http://apps.gs1.org/GDD/Pages/clDetails.aspx?semanticURN=urn:gs1:gdd:cl:CapacityPlanStatusEnumeration |
| TransportCapacityPlan | TransportPlanningDateTypeEnumeration | http://apps.gs1.org/GDD/Pages/clDetails.aspx?semanticURN=urn:gs1:gdd:cl:TransportPlanningDateTypeEnumeration |
| <u>TransportCapacityPlanLineItem</u> | CargoTypeCode | http://apps.gs1.org/GDD/Pages/clDetails.aspx?semanticURN=urn:gs1:gdd:cl:CargoTypeCode |



Note: Refer to the Global Data Dictionary (GDD) for the code values.

5 Business Message Examples

5.1 Example

A Logistic Service Buyer, ABC_Company identified by GLN 1234567890128, is providing a forecast of capacity requirements for 6 months to Logistics_International identified by GLN 9876543212344.

Party Information

| GS1 Global Location Number | Party Type |
|----------------------------|-------------------------|
| 1234567890128 | Logistic Service Buyer |
| 9876543212344 | Logistic Service Seller |

Message Example

| Attribute | Value |
|--|---------------------|
| TransportCapacityPlan | |
| creationDateTime | 2009-12-14T12:00:00 |
| documentStatusCode | ORIGINAL |
| documentActionCode | ADD |
| transportPlanningDateTypeCode | DELIVERY_DATE |
| EntityIdentification (+transportCapacityPlanIdentification) | |
| entityIdentification | PLAN1234 |
| TransactionalParty (+logisticServicesBuyer) | |
| gln | 1234567890128 |
| TransactionalParty (+logisticServicesSeller) | |
| gln | 9876543212344 |
| DateTimeRange (+planPeriod) | |
| beginDate | 2010-01-01 |
| endDate | 2010-06-30 |
| DocumentReference (+transportCapacityRequirements) | |
| entityIdentification | RQMT1234 |
| TransportCapacityPlanLineItem | |
| lineItemNumber | 1 |
| capacityPlanStatusCode | ACCEPTED_IN_FULL |
| cargoTypeCode | 12 |
| requestedGrossWeight | 50 KGM |
| requestedGrossVolume | 9.22 CBM |
| proposedGrossWeight | 50 KGM |
| proposedGrossVolume | 9.22 CBM |
| LogisticLocation (+pickUpLocation) | |
| unLocationCode | US LAX |
| LogisticLocation (+dropOffLocation) | |

| Attribute | Value |
|--|------------|
| unLocationCode | US EWR |
| <i>DateTimeRange (+planPeriod)</i> | |
| beginDate | 2010-01-01 |
| endDate | 2010-01-07 |
| <i>DeliveryTerms</i> | |
| incotermsCode | CFR |
| <i>LogisticLocation</i> | |
| unLocationCode | US RDG |
| TransportCapacityPlanLineItemDetail | |
| <i>TransportCargoCharacteristics</i> | |
| cargoTypeCode | 12 |
| cargoTypeDescription | Furniture |
| totalGrossWeight | 50 KGM |
| totalGrossVolume | 9.22 CBM |
| totalItemQuantity | 75 |
| totalPackageQuantity | 5 |
| <i>LogisticUnitTotal (+tradeUnitTotal)</i> | |
| packageTypeCode | CS |
| totalPackageQuantity | 25 |
| <i>LogisticUnitTotal (+logisticUnitTotal)</i> | |
| packageTypeCode | 200 |
| totalPackageQuantity | 25 |
| <i>DocumentReference (+transportCapacityRequirements)</i> | |
| entityIdentification | RQMT1234 |
| lineItemNumber | 1 |

6 Implementation Considerations

6.1 User Guide

The Functional User Guide contains more information about the structure and content of the Transport Capacity Plan message: http://www.gs1.org/docs/ecom/xml/3/3.4/eCom-Trade_messages.html#TransportCapacityPlan

6.2 Message Specific Considerations

Not applicable

7 Summary of Changes

Any change in the GS1 standards is done based on the Work Request (WR) submitted by the GS1 User Companies or Member Organisations. All Work Requests are documented in the Work Request system available on the GS1 website: <http://wr.gs1.org>. The system is accessible to registered users. New visitors need to register first, to be able to access it. WRs can be searched by the number referenced in tables below, see: Search Work Requests. The number starts with the two last digits of the year when it was submitted, followed by the consecutive number within that year.



Note: WRs submitted earlier than February 2012 should be searched in Old Change Requests.

7.1 BMS Release 3.0

| Change | Associated CR Number |
|-----------------|----------------------|
| Initial Version | N/A |

7.2 BMS Release 3.1

No work requests. Indirect changes due to upgrade to new Shared and eCom Common libraries.

7.3 BMS Release 3.2

| Change | Associated WR |
|---|------------------|
| Added Attribute Value Pair at the root, line item and sub line item levels | 14-000110 |
| <div><div>class TransportCapacityPlan - maintenance view</div><div><div>«root» TransportCapacityPlan</div><div>+ transportPlanningDateTypeCode :TransportPlanningDateTypeEnumeration</div><div><div><i>maintenance</i></div><div>Change: (Verified) 3.2 changed generalisation from Document to eComDocument class to include AVP (WR 14-110)</div></div></div></div> | |

| Change | Associated WR |
|--|---|
| <ul style="list-style-type: none"> Added a reference to parent line number to all LineItem classes, to support hierarchical items (WRs 14-021 & 14-044) Added Attribute Value Pair at the root, line item and sub line item levels (WR 14-110) <div data-bbox="296 427 1107 983"> <p>class TransportCapacityPlanLineItem - maintenance view</p> <pre> class TransportCapacityPlanLineItem + lineItemNumber: positiveInteger + capacityPlanStatusCode: CapacityPlanStatusEnumeration + cargoTypeCode: CargoTypeCode [0..1] + cargoTypeDescription: Description200 [0..1] + requestedGrossVolume: Measurement [0..1] + requestedGrossWeight: Measurement [0..1] + proposedGrossVolume: Measurement [0..1] + proposedGrossWeight: Measurement [0..1] + parentLineItemNumber: positiveInteger [0..1] «association» + avpList: Ecom_AttributeValuePairList [0..1] maintenance Change: (Verified) 3.2 added +avpList (WR 14-110) Change: (Verified) 3.2 added +parentLineItemNumber (WR 14-021 & 14-044) </pre> </div> | <p>14-000021 14-000044 14-000110</p> |
| <p>Added Attribute Value Pair at the root, line item and sub line item levels</p> <div data-bbox="296 1050 1038 1447"> <p>class TransportCapacityPlanLineItemDetail - mainte...</p> <pre> class TransportCapacityPlanLineItemDetail «association» + avpList: Ecom_AttributeValuePairList [0..1] maintenance Change: (Verified) 3.2 added +avpList (WR 14-110) </pre> </div> | <p>14-000110</p> |

7.4 BMS Release 3.3

| Change | Associated WR |
|---|---|
| <p>Created Ecom_EntityIdentification class and changed association from the previous EntityIdentification</p> | <p>15-000314</p> <p>Make GS1 identification keys optional in GS1 EDI XML</p> |
| <p>Created Ecom_DocumentReference class and changed association from the previous DocumentReference</p> | <p>15-000314</p> <p>Make GS1 identification keys optional in GS1 EDI XML</p> |
| <p>Created Ecom_DocumentReference class and changed association from the previous DocumentReference</p> | <p>15-000314</p> <p>Make GS1 identification keys optional in GS1 EDI XML</p> |

7.5 BMS Release 3.4

No work requests. Indirect changes due to upgrade to new Shared and eCom Common libraries.

7.6 BMS Release 3.5

No work requests. Indirect changes due to upgrade to new Shared and eCom Common libraries.

7.7 BMS Release 3.5.1

No work requests. Indirect changes due to upgrade to new Shared and eCom Common libraries.

8 Appendices

Not Applicable

9 Acknowledgements

9.1.1 Work Group

| Function | Name | Company / organisation |
|----------|-----------------------------|---|
| Co-chair | Rossner (Pottier), Natascha | GS1 France |
| Co-chair | Schmidt, Tom Eric | August Storck KG |
| Member | Bemrose, Jonathan | R&R Ice Cream |
| Member | Bodemer, Petra | dm-drogerie markt GmbH + Co. KG |
| Member | Boikanyo, Rebene | GS1 South Africa / Consumer Goods Council of South Africa |
| Member | Canada, ON | M3B 3L1 |
| Member | Carlson, Jim | General Mills, Inc. |
| Member | Chresta, Richard | GS1 Switzerland |
| Member | Cook, Don | Wal-Mart Stores, Inc. |
| Member | Cox, Marc | Philips Electronics N.V. |
| Member | Darnell, David | Systrends |
| Member | De Flou, Nele | GS1 Belgium & Luxembourg |
| Member | Dicks, Arne | GS1 Germany |
| Member | Duvinger, Karina | GS1 Sweden |
| Member | Foerderer, Klaus | GS1 Germany |
| Member | Gathmann, Stefan | GS1 Ireland |
| Member | Grangard, Anders | GS1 Global Office |
| Member | Harpell, Eileen | GS1 Community Room Staff |
| Member | Hand, Phil | JDA Software |
| Member | Herregodts, Kurt | GS1 Belgium & Luxembourg |
| Member | Kempkes, Fred | Unilever N.V. |
| Member | Kernan, Brendan | GS1 Ireland |
| Member | Kidd, Robin | Nestle |
| Member | Krid, Anne-Claire | GS1 France |
| Member | Lanoue, Tom | General Mills, Inc. |
| Member | Laur, Rita | GS1 Canada |
| Member | Lenman, Mia | GS1 Sweden |
| Member | Lerch, Hanjoerg | METRO Group |
| Member | Moberg, Dale | Axway |
| Member | Montes de Oca, Alejandra | GS1 Mexico |
| Member | Ng, Ella | GS1 Australia |
| Member | Peelen, Esther | GS1 Netherlands |
| Member | Pelekies, Andreas | GS1 Germany |

| Function | Name | Company / organisation |
|----------|----------------------|-----------------------------------|
| Member | Perrier, Patricia | GS1 France |
| Member | Przybilla, Christian | GS1 Germany |
| Member | Pujol, Xavier | GS1 Spain |
| Member | Racek, Greg | Wal-Mart Stores, Inc. |
| Member | Repetto, Mirko | GS1 Italy |
| Member | Robba, Steven | 1WorldSync Holdings, Inc. |
| Member | Rosell, Pere | GS1 Spain |
| Member | Rosenberg, Steven | GS1 US |
| Member | Schmid, Sue | GS1 Australia |
| Member | Schneider, Christian | GS1 Switzerland |
| Member | Sehorz, Eugen | GS1 Austria |
| Member | Sharma, Vishal | General Mills, Inc. |
| Member | Shimazaki, Ayako | GS1 Japan |
| Member | Sion, Emilie | GS1 France |
| Member | Souza, Nadia | GS1 Brasil |
| Member | Strand, Roman | GS1 Germany |
| Member | Tan, Milton | GS1 Malaysia |
| Member | Tompsett, Simon | Waitrose |
| Member | Trelle, Ute | 1WorldSync Holdings, Inc. |
| Member | Tse, Steve | GS1 Hong Kong |
| Member | Tyson, Betty | Knouse Foods Cooperative, Inc |
| Member | Van den Bergh, Senne | GS1 Belgium & Luxembourg |
| Member | Van der Eijk, Pim | OASIS - Sonnenglanz Consulting BV |
| Member | Veldhuis, Saskia | Procter & Gamble Co. |
| Member | Welch, Shan | GS1 UK |
| Member | Westerkamp, Jan | GS1 Netherlands |
| Member | Wilson, Mary | GS1 US |
| Member | Windsperger, Bekki | Best Buy Co., Inc. |
| Member | Yang, Shaopeng | GS1 China |
| Member | Yusdiar, Dani | GS1 Indonesia |
| Member | Zwanziger, Greg | SUPERVALU |

9.1.2 Development Team Members

| Function | Name | Organisation |
|----------------------------|-----------------|-------------------|
| GSMP Process Lead | David Buckley | GS1 Global Office |
| Technical Development Lead | Miklos Bolyky | GS1 Global Office |
| Peer Review | Mark Van Eeghem | GS1 Global Office |

